

JW902

B&C Sirocco /women

The Windbreaker



Composition

100% nylon taffeta

Size

XS, S, M, L, XL, 2XL

Packing

10 pcs/pack & 30 pcs/carton

Details

Lightweight Jacket - Essential style without lining.

Keep wind out with this full-zip lightweight layer featuring a 100% nylon taffeta. The B&C Sirocco /women is the market reference windbreaker with a feminine cut. Easily packing in a pocket, This jacket comes with an adjustable concealed storm hood, adjustable bottom hem and 2 front pockets. Its 12-colour and 6-size range allow a wide range of uses to match your brand, your team or your action.

For the perfect duo, pair it with the B&C Sirocco.

Protection

- Showerproof and water-repellent essential windbreaker.
- Adjustable storm hood concealed in the collar for added protection.
- Elasticated cuffs.

Style & Fit

- Essential windbreaker style, foldaway jacket in pocket with double slider zip.
- Full zip opening with zip pull.
- 2 front pockets.
- Adjustable bottom hem with drawcord.
- Wide colour palette and range of sizes makes it versatile for a wide range of uses.
- Adjustable bottom hem for a better fit.
- Fold-away jacket in pocket with double slider zip.



IN

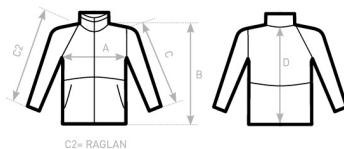
Colors

- | | | | |
|----------------|------------------|----------------|---------------------|
| 001 WHITE | 002 BLACK | 003 NAVY | 004 RED |
| 235 ORANGE | 350 PURPLE | 441 ATOLL | 450 ROYAL BLUE |
| 732 REAL GREEN | 770 ULTRA YELLOW | 985 PIXEL PINK | 987 PIXEL TURQUOISE |

Care instructions



All our products are tested and approved using all main print techniques.



B&C SIROCCO /WOMEN JW 902	XS	S	M	L	XL	XXL	XXXL
A HALF CHEST	50	52	54	56	58	60	-
B BODY LENGTH FROM NECK POINT	70	72	74	76	78	80	-
C SLEEVE LENGTH	61	63	65	67	69	71	-
D CENTER BACK LENGTH	69	71	73	75	77	79	-



DUO
CONCEPT

Want the same style for everyone?

Try the B&C Sirocco



Want the same style for everyone?

Try the B&C Sirocco /kids